

# Nutsche

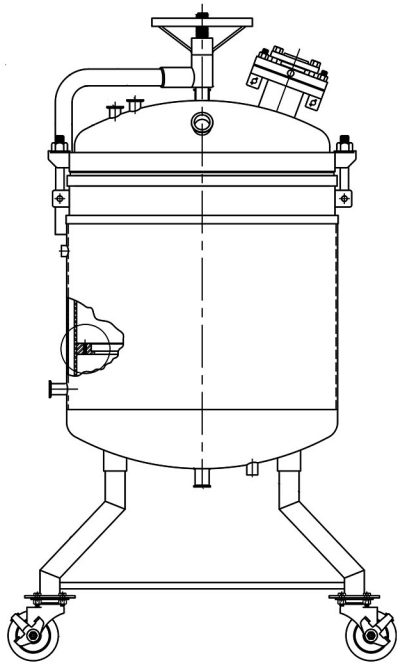
**SPARKLER FILTERS INC.**

Allaying separation anxiety since 1927



*Consider using this filter if your application...*

- requires maximum yield
- collects solids
- is batch filtration
- requires a custom solution
- is a controlled or regulated product



**Typical Filter Media**

Cellulose

Synthetic

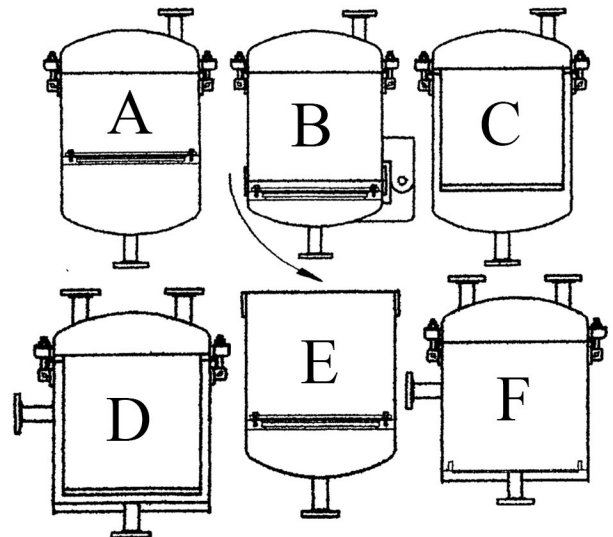
Wire

Membrane

## Features and Benefits

- 6 Standard Models
- Low Consumable Cost
- Easy to Use and Handle
- Basket Configuration Option
- Zero Leak, ASME Design

*Custom Sizes Available from 8" to over 72"*



\*additional details next page

*Contact Sparkler today to discuss options or inquire about a rental!*

## Common Applications:

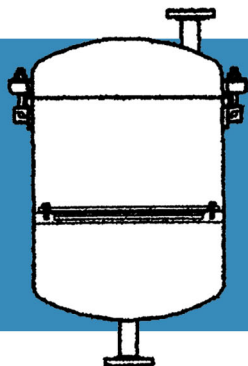


Pharmaceutical  
Research & Development

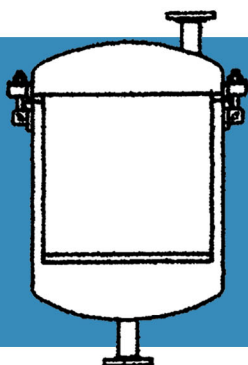




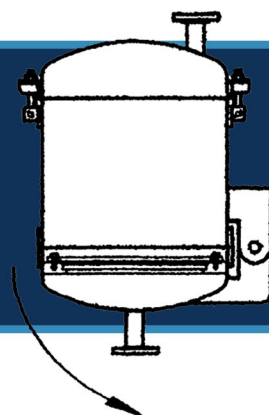
## TYPES OF NUTSCHE FILTERS



A. **“Standard Nutsche”** - Vertical tank with filter plate support and filter plate mounted into tank, manual clean out or filter cake is dissolved in place.

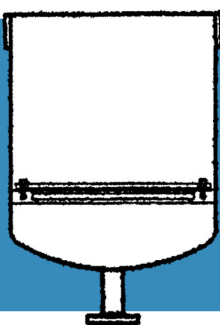
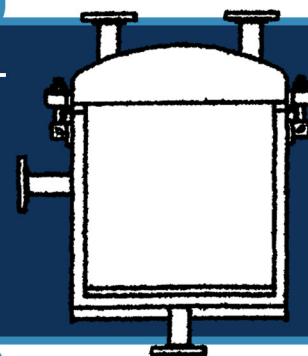


B. **“Bottom Drop Nutsche”**- Vertical tank with bottom drop door of full diameter with filter plate built into bottom drop door. Filter cake drops when bottom swings open.



C. **“Basket Nutsche”**- Vertical tank with filter plate mounted into bottom of basket insert. Basket is suspended inside a dished bottom tank. Basket cylinder attaches to plate by side tie rods.

D. **“Basket/Standard Horizontal Plate Filter Nutsche”**- Vertical tank with flat bottom to use either a basket insert with single filter plate in bottom or standard horizontal plate cartridge. This is limited only to the standard horizontal plate filter. Tank diameters for standard cartridges 8”, 14”, 18” and 33”.



E. **“Open Top Vacuum Nutsche Filter”**- Vertical tank with filter plate support and filter plate built into the tank, no swing bolted cover, vacuum operation only. Manual clean out of filter cake or cake is dissolved in place.

F. **“Built-In Single Plate HPF Tank Filter”**- Filter tank is a standard horizontal plate filter tank with filter plate machined into bottom tank which is the only filter plate used.

