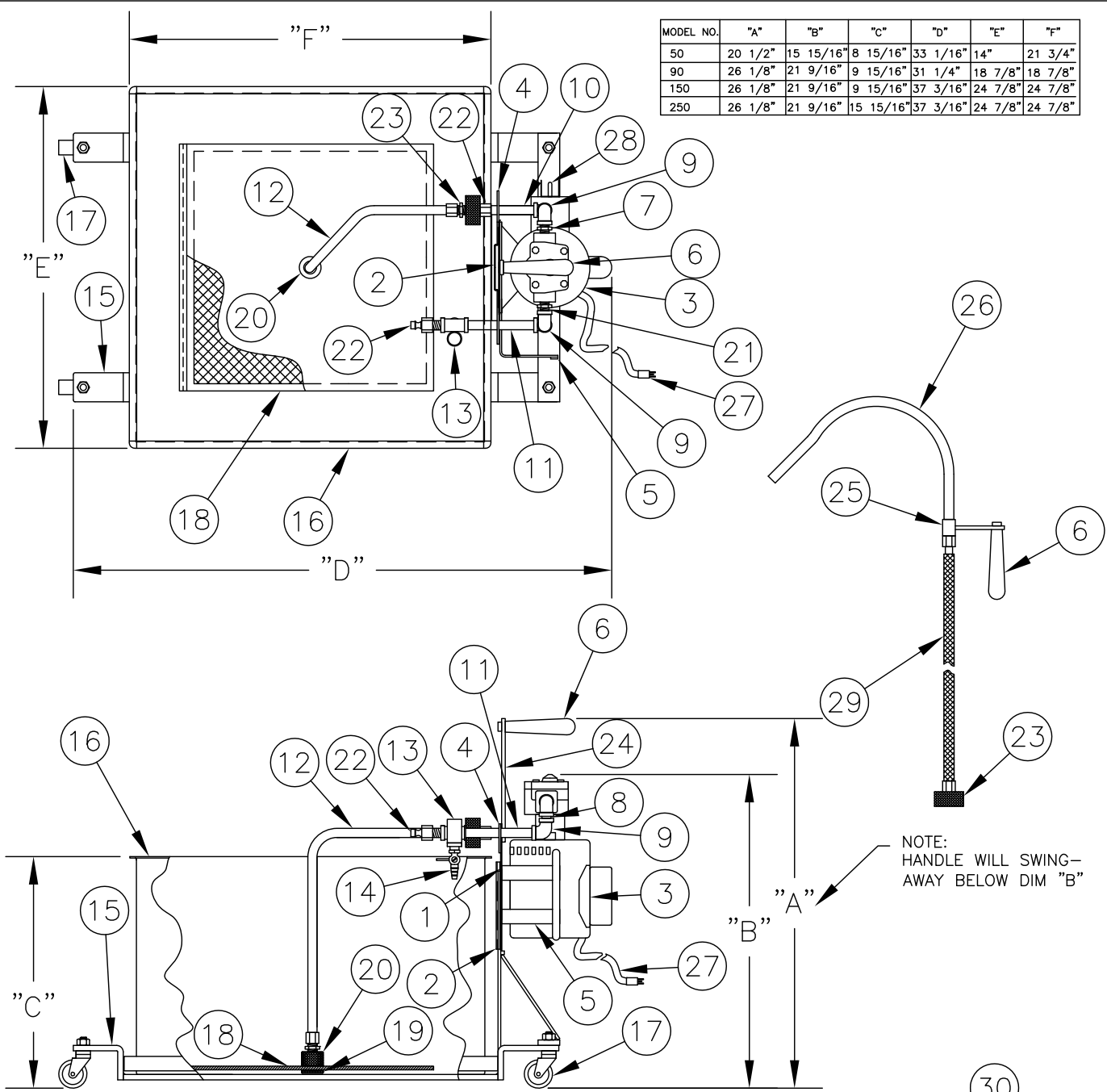


| MODEL NO. | "A" | "B" | "C" | "D" | "E" | "F" |
|-----------|---------|-----------|-----------|----------|---------|---------|
| 50 | 20 1/2" | 15 15/16" | 8 15/16" | 33 1/16" | 14" | 21 3/4" |
| 90 | 26 1/8" | 21 9/16" | 9 15/16" | 31 1/4" | 18 7/8" | 18 7/8" |
| 150 | 26 1/8" | 21 9/16" | 9 15/16" | 37 3/16" | 24 7/8" | 24 7/8" |
| 250 | 26 1/8" | 21 9/16" | 15 15/16" | 37 3/16" | 24 7/8" | 24 7/8" |



| PARTS LIST NO. | ITEM | DRAWING NO. | TOTAL NUMBER REQ'D. | PARTS LIST NO. | ITEM | DRAWING NO. | TOTAL NUMBER REQ'D. |
|----------------|-------------------------|-------------------------|---------------------|----------------|--------------------------------|-------------------------|---------------------|
| 1 | MOTOR MOUNTING PLATE | 19776-B | 1 | 16 | POT | 19781-C 19782-C 20012-B | 1 |
| 2 | MOTOR MOUNTING BRACKET | 19776-B | 1 | 17 | CASTER | | 4 |
| 3 | PUMP AND MOTOR ASS'Y. | | 1 | 18 | FILTER PLATE | 19312-A | 1 |
| 4 | PIPE SUPPORT | | 1 | 19 | BOTTOM PLATE COUPLING | 19337-A | 1 |
| 5 | CORD BRACKET | 19774-C | 1 | 20 | TOP PLATE COUPLING | 19337-A | 1 |
| 6 | HANDLE (HEAT RESISTANT) | | 2 | 21 | PUMP NIPPLE | | 2 |
| 7 | PUMP BUSHING | | 2 | 22 | SNAP-TITE NIPPLE | | 2 |
| 8 | CLOSE NIPPLE | | 1 | 23 | SNAP-TITE COUPLER W/ INSULATOR | | 2 |
| 9 | ELBOW | | 4 | 24 | HANDLE BRACKET | 20244-A | 1 |
| 10 | SUCTION NIPPLE | | 1 | 25 | HANDLE ADAPTER | 20089-A | 1 |
| 11 | DISCHARGE NIPPLE | | 1 | 26 | DISCHARGE NOZZLE | 19730-B | 1 |
| 12 | SUCTION TUBE ASS'Y. | 19784-A | 1 | 27 | ELECTRIC CORD | | 1 |
| 13 | NOZZLE TEE | 19754-C | 1 | 28 | POWER SWITCH | | 1 |
| 14 | RELIEF VALVE | | 1 | 29 | HOSE (BRAIDED, FLEXIBLE) | | 1 |
| 15 | BASE ASSEMBLY | 19780-C 20143-C 19870-C | 1 | 30 | SPARKLAID SCOOP | | 1 |

SPARKLER FILTERS INC.
CONROE, TEXAS

SOF FILTER ASS'Y. & PARTS LIST

| | | | | | |
|-------|----------|----------|----------|----------|--------|
| DATE | 06/14/07 | DRAWN BY | D. SKEEN | DWG. NO. | F-3579 |
| SCALE | 3/32"=1" | CKD. BY | | | |

